

FLOWROX

October 2014

Installation, Operation and Maintenance Instructions for Flowrox PVEG valve



These instructions must be read carefully and understood prior to the installation, use, and servicing of this product.

FLOWROX OY
P.O. Box 338
FI-53101 Lappeenranta, Finland
Tel. +358 (0)201 113 311, fax +358 (0)201 113 300
E-mail: sales@flowrox.com



1 FLOWROX PVEG INSTRUCTIONS

1.1 INSTALLATION INTO PIPELINE

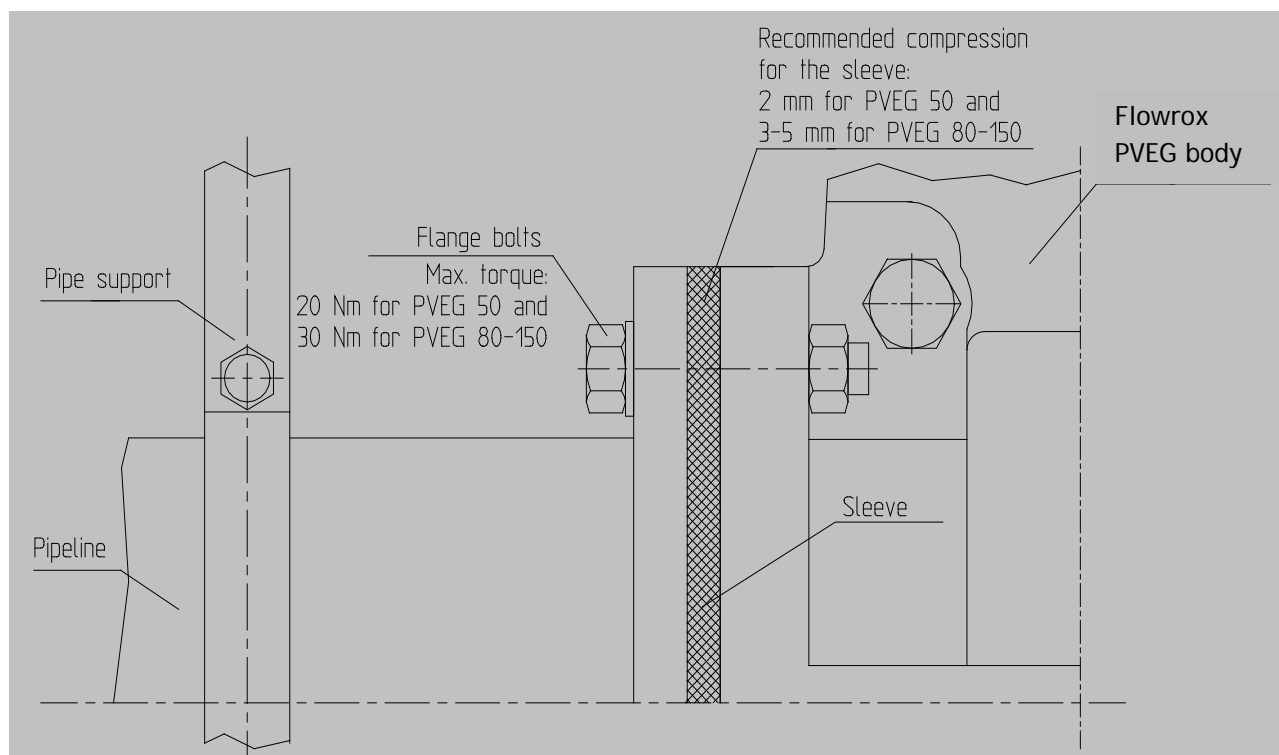
Before starting the installation of Flowrox PVEG, loose pipe supports from both sides of the valve.

Adjust the distance between the pipe flanges to be similar to the face-to-face dimension of the Flowrox valve.

Install the valve. Notice! Assemble all flange bolts through flanges before starting to tight any hex nuts.

Use torque wrench to tight the hex nuts, **maximum allowed torque is 30 Nm (ca. 20 lbf-ft) for sizes PVEG80 - PVEG150 (PVEG3" - PVEG6") and 20 Nm (ca. 15 lbf-ft) for PVEG50 (PVEG2").**

Check during the tightening that the compression of the rubber flange of the sleeve is max. 3-5 mm (0,12" - 0,2") for sizes 80 mm - 150 mm (3" - 6"). Maximum compression for PVEG50 (PVEG2") is 2 mm (0,08").



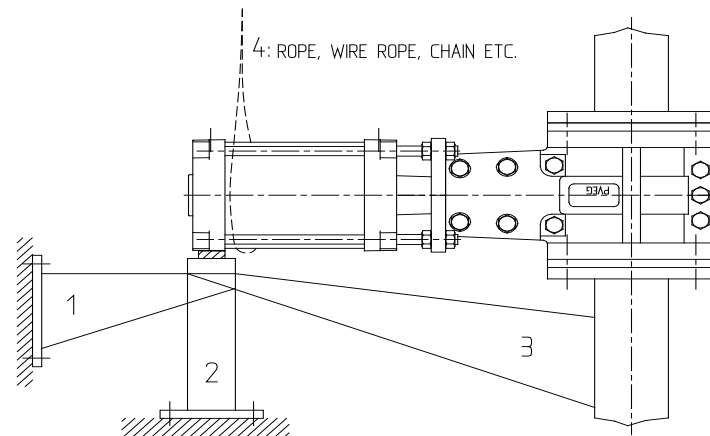
Drawing 1.

IMPORTANT !

Bolt/hex nut torques over 30 Nm may cause damages to the Flowrox PVEG body. Never "pull" the whole pipeline with flange bolts to get the flanges tight.

If you have to install the PVEG valve with pneumatic (A) actuator horizontally, it has to be supported to ensure the operation. The support can be fixed on the wall (1), on the floor (2) or the pipeline (3). Also a simple rope, wire rope, chain etc. (4) can be used to support the actuator (see drawing 2.).

The valve can be installed in either way with respect to the flow direction.



Drawing 2.

1.2 PVEG DISASSEMBLE AND SLEEVE EXCHANGE

Open the valve and detach it from the pipeline.

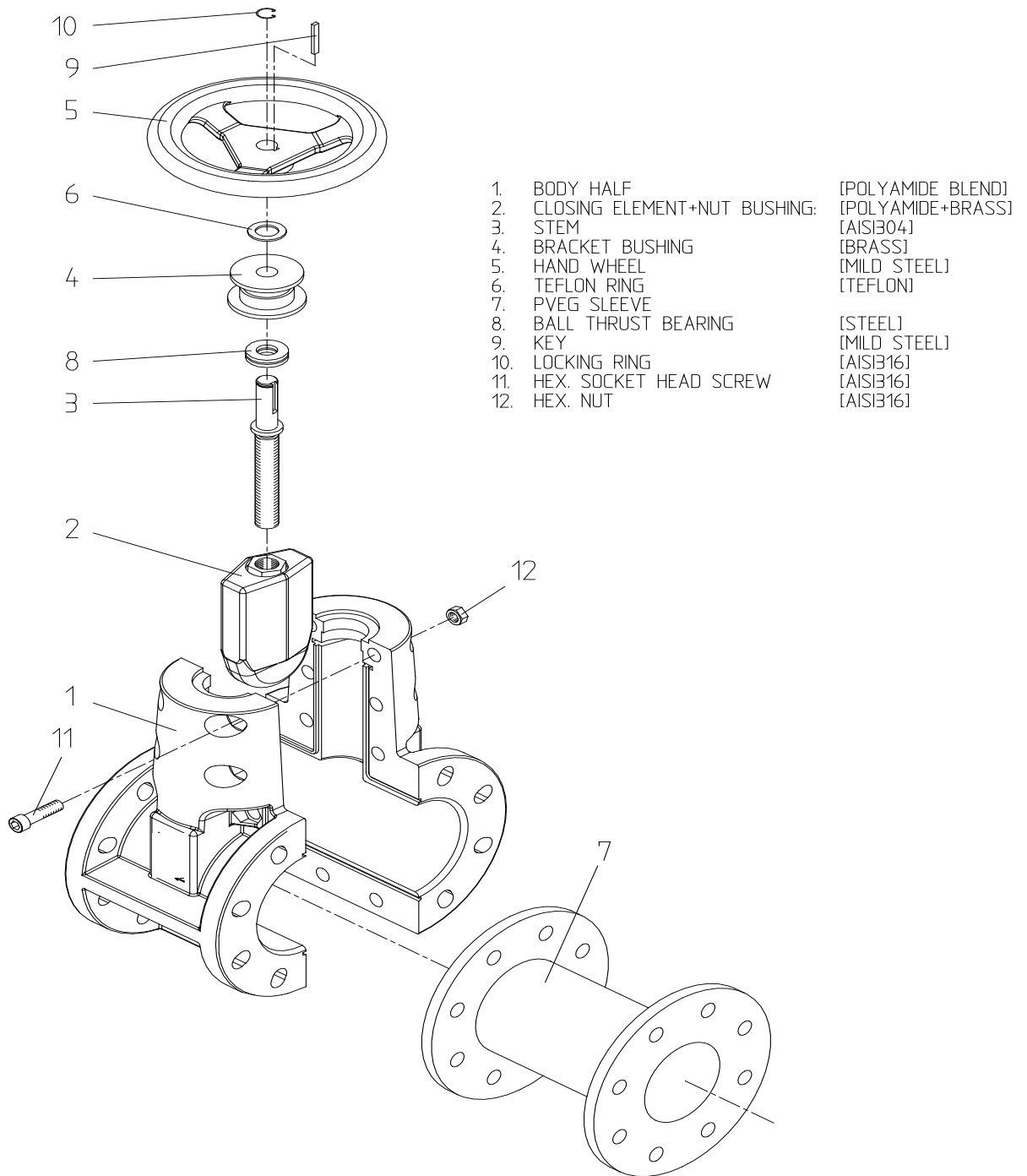
The body bolts of the PVEG valve are stainless steel and can be removed by a 10 mm hexagon key and 19mm socket wrench for 2" and 3" valves and a 14 mm hexagon key and 24mm socket wrench for 4" and 6" valves.

If other body half cannot be removed from PVEG A valve, remove lower nuts (part 8.) and close the valve carefully by pneumatic cylinder so that cylinder (part 3.) raises up from the attachment frame (part 5.). Do not change the position of upper nuts (part 8.).

- Remove the body bolts (part 11/12 or 9/10) and other body half.
- Remove the broken sleeve (part 7.) and put in the new sleeve.
- Install body half and body bolts.

If lower nuts (part 8.) had to be removed from PVEG A valve, open the valve by pneumatic cylinder so that cylinder (part 3.) lands down and it is possible to install removed lower nuts (part 8.). Check that the valve will close totally.

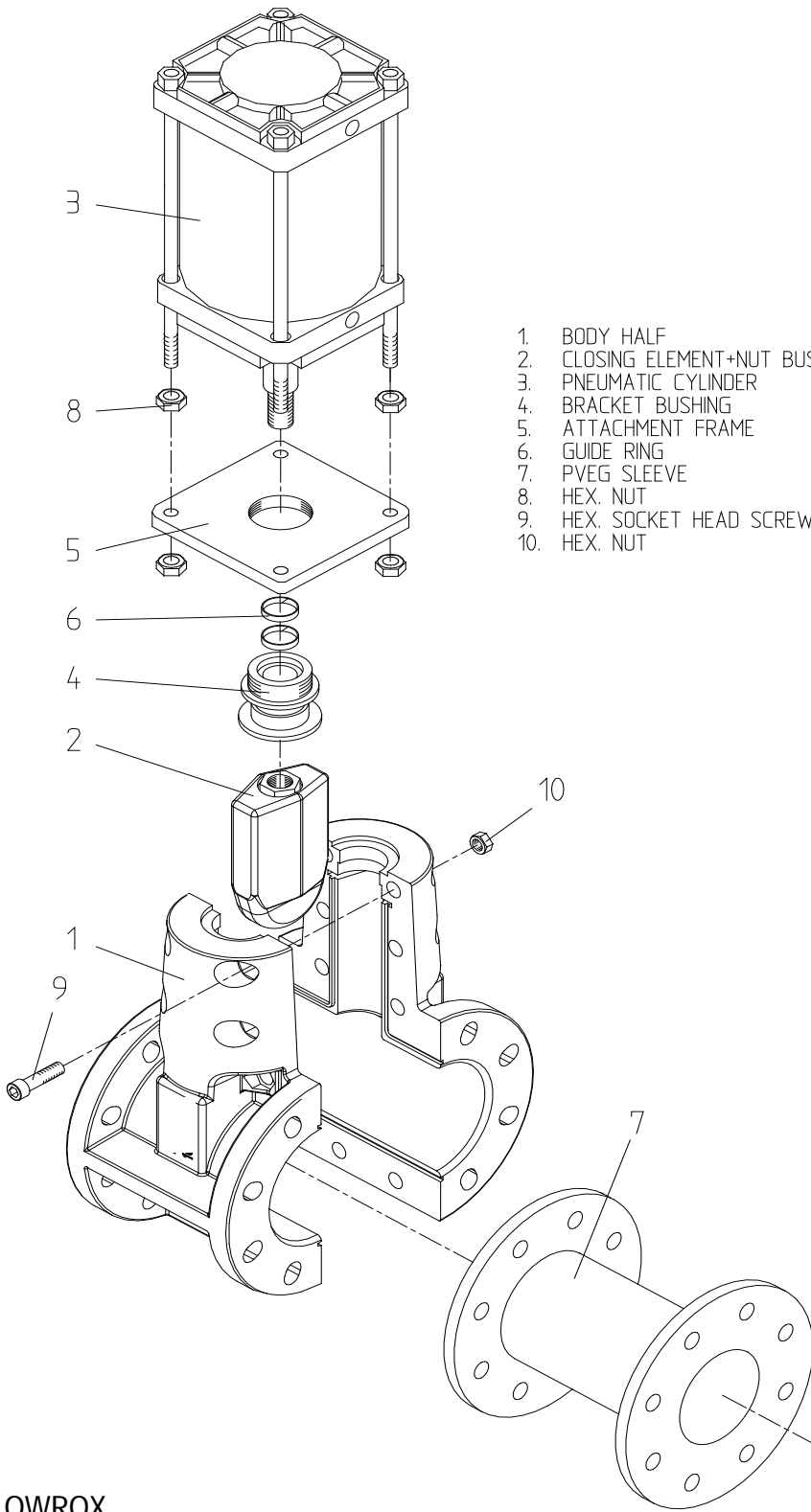
Install the valve into the pipeline.



FLOWROX
FLOWROX PVEG M Valve - Manual Actuator

Dwg. no. 450584

05.07.02



- | | | |
|-----|------------------------------|-------------------|
| 1. | BODY HALF | [POLYAMIDE BLEND] |
| 2. | CLOSING ELEMENT+NUT BUSHING: | [POLYAMIDE+BRASS] |
| 3. | PNEUMATIC CYLINDER | [ALUM./Fe] |
| 4. | BRACKET BUSHING | [Fe/PAINTED] |
| 5. | ATTACHMENT FRAME | [Fe/PAINTED] |
| 6. | GUIDE RING | [TURCITE] |
| 7. | PVEG SLEEVE | |
| 8. | HEX. NUT | (AISI316) |
| 9. | HEX. SOCKET HEAD SCREW | [AISI316] |
| 10. | HEX. NUT | [AISI316] |

FLOWROX
FLOWROX PVEG A Valve - Pneumatic Actuator

Dwg. no. 451795 02.09.05